



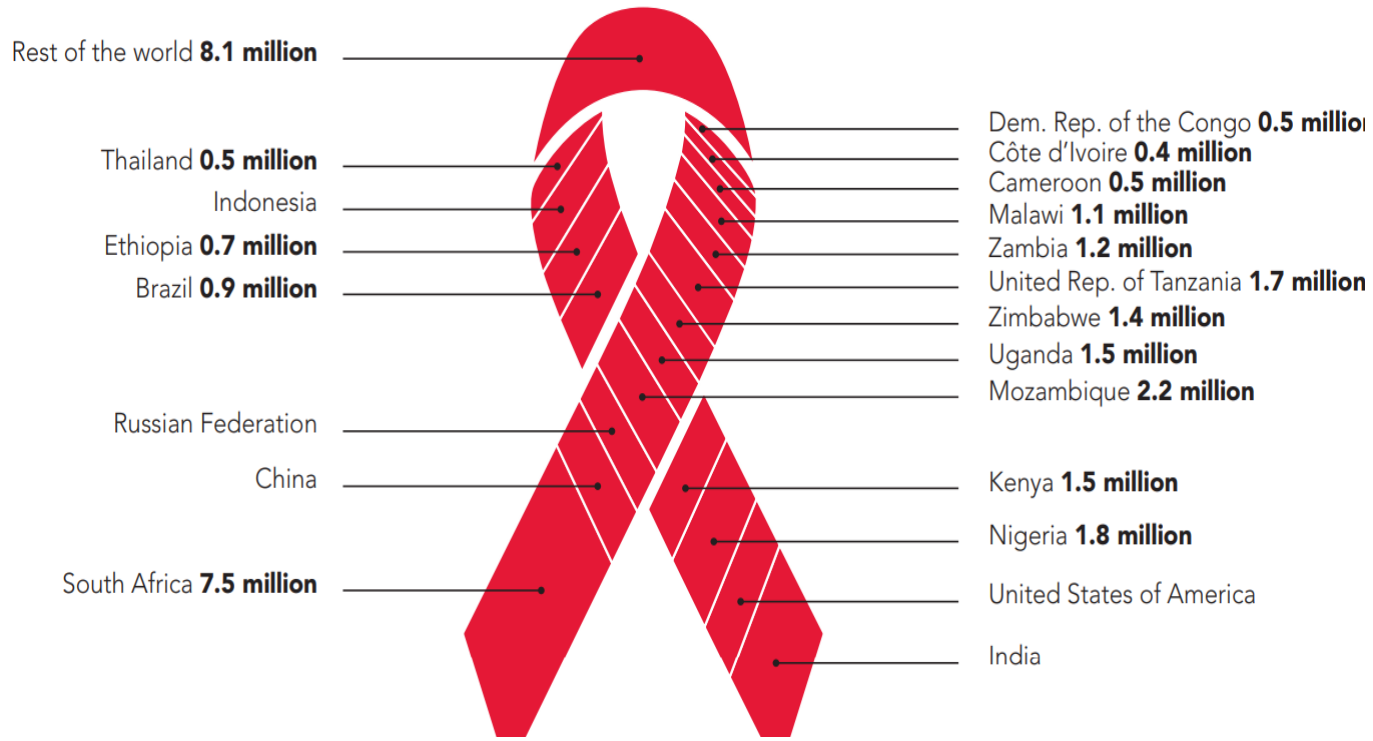
World AIDS Day 2020

HIV/AIDS Situation in Bangladesh

Prof. Dr. Md. Shamiul Islam
Director (MBDC) & Line Director
TB-L & AIDS/STD Programme
Directorate General of Health Services (DGHS)



Global Estimates for Adults and Children | 2019



Total: 38 million [31.6 million–44.5 million]

People living with HIV

38 million [31.6 million–44.5 million]

People newly infected with HIV

1.7 million [1.2 million–2.2 million]

Deaths due to AIDS

690 000 [500 000–970 000]

People living with HIV on antiretroviral therapy

26 million [25.1 million–26.2 million]

Source: UNAIDS



Regional Estimates Asia and the Pacific Region |2019

People living with HIV in Asia and the Pacific	5.8 million [4.3 million– 7.2 million]
New HIV infections in the region	300 000 [210 000– 390 000]
New HIV infections among children	15 000 [8900– 22 000]
People had access to antiretroviral therapy	3.5 million [3.4 million– 3.5 million]
People died of AIDS-related illnesses in 2018	160 000 [94 000– 240 000]

Source: UNAIDS



Bangladesh Situation

- In Bangladesh the first HIV case was detected in 1989
- HIV prevalence remains less than 0.01% among general population
- HIV prevalence remains about 3.9% among the key population mostly in PWID as per 2016 surveillance
- Positivity among people who injects drug (PWID) in Dhaka is about 2% as per current programme data
- Estimated number of People Living With HIV is 14,000

(Estimates range: 12,000-16,000, Source: UNAIDS, 2018)



HIV/ AIDS Situation of 2020

(November, 2019- October, 2020)



Testing and Screening Information in-2020

Indicators	Testing	Screening
KPs	60,428	
TB-HIV other comorbidity	16,087	
General Population	32,800	
GAMCA	311,551	
SBTP	0	830,424
PMTCT	81,299	
Total	502,165	830,424

Source: Programme Data, private sector diagnosis, SBTP



Reported Cases-2020

New HIV positive and Death Cases

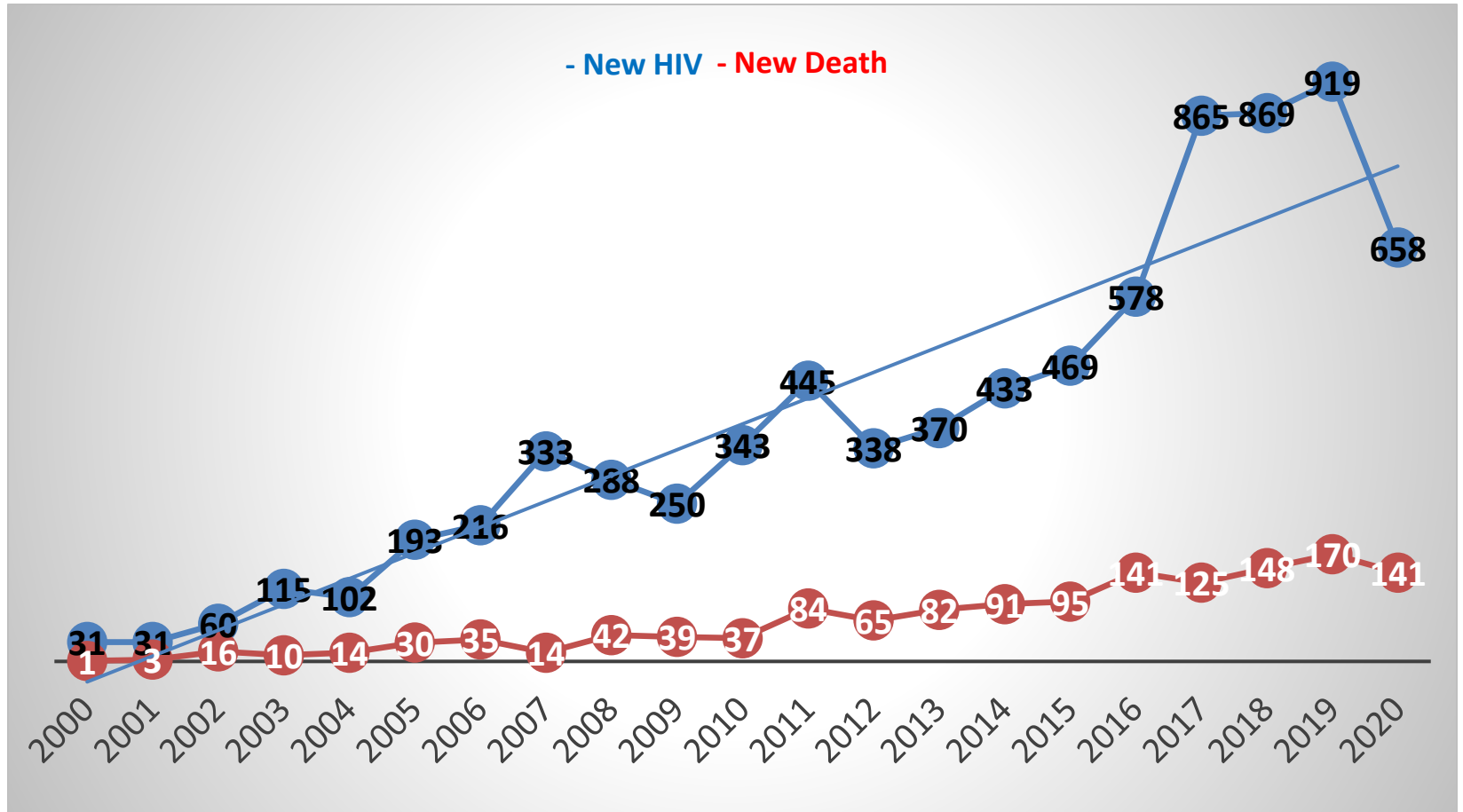
Indicator	New Cases in 2020	Cumulative Cases as of 1989-2020
HIV positive	658	8,032
Death	141	1,383

Rohingya (FDMN) cases = 124

Source: Implementing Partners, ASP



New HIV and Death Cases Per Year (1989-2020)

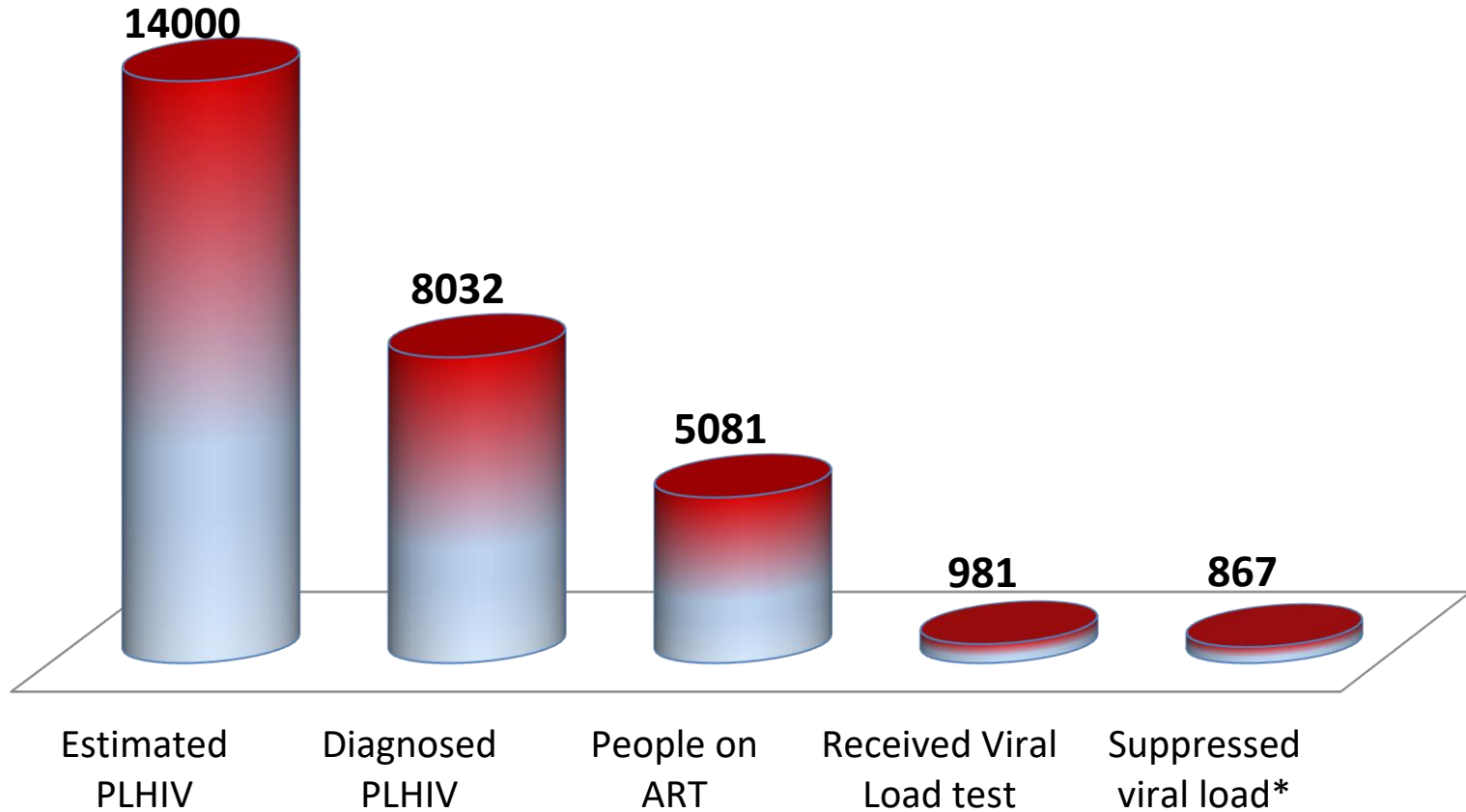


Source: ASP



জাতীয় এইডস/এসটিভি কন্ট্রোল
যাছা অধিদপ্তর, স্বাস্থ্য ও পরিবার কল্যাণ মন্ত্রণালয়

Cumulative cross sectional cascade for HIV Treatment and Care, Bangladesh, 2020



* Number of people on ART who received a viral load test in the past year and have VL of <math><1000\text{copies/ml}</math>

90-90-90 Status in Bangladesh 2020

57%



76%

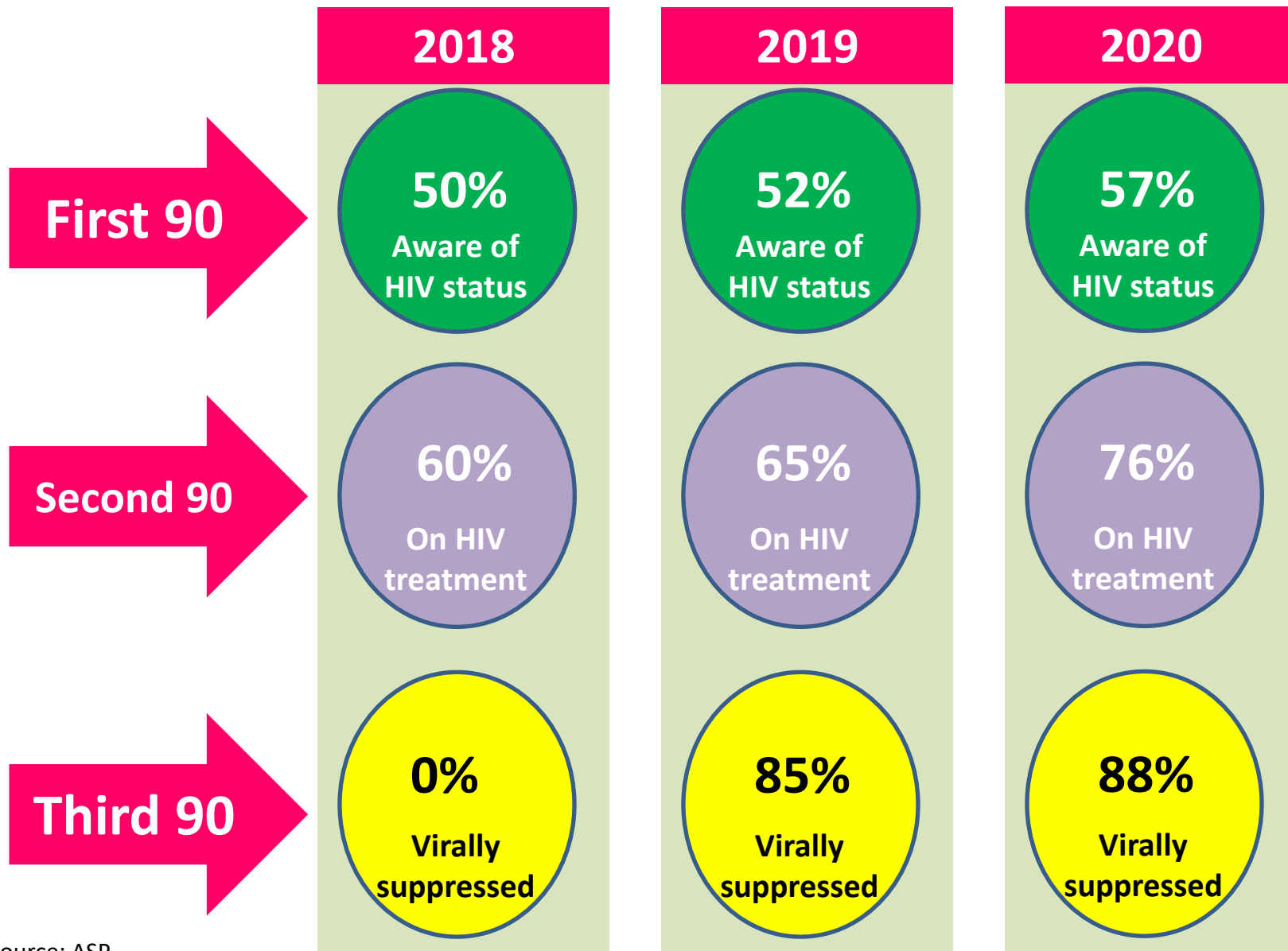


88%



Source: ASP

Year wise comparison of Fast Track Strategy in Bangladesh

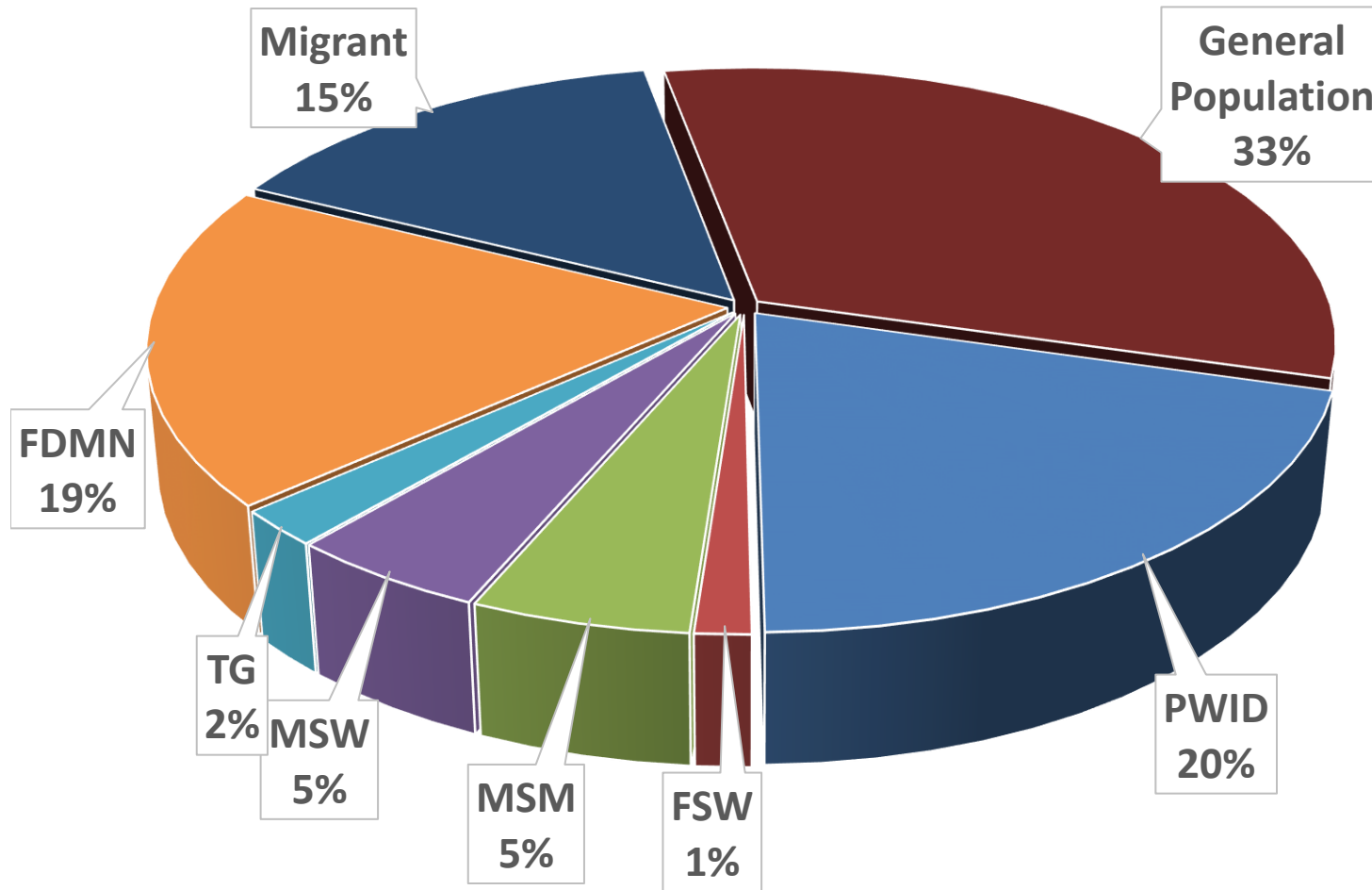


Source: ASP



জাতীয় এইডস/এসটিভি কন্ট্রোল বাহা
এইডসে সাক্ষ্যকে জামিন দেব

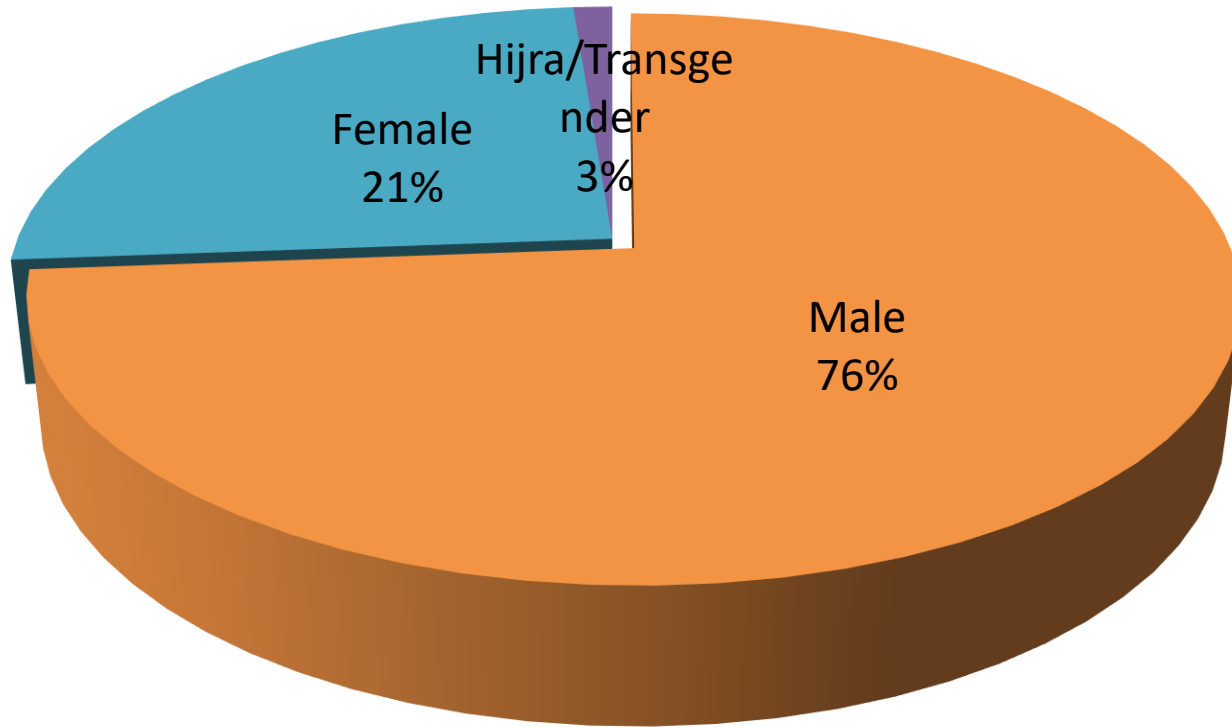
Population Category among newly infected PLHIV: 2020



Source: ASP

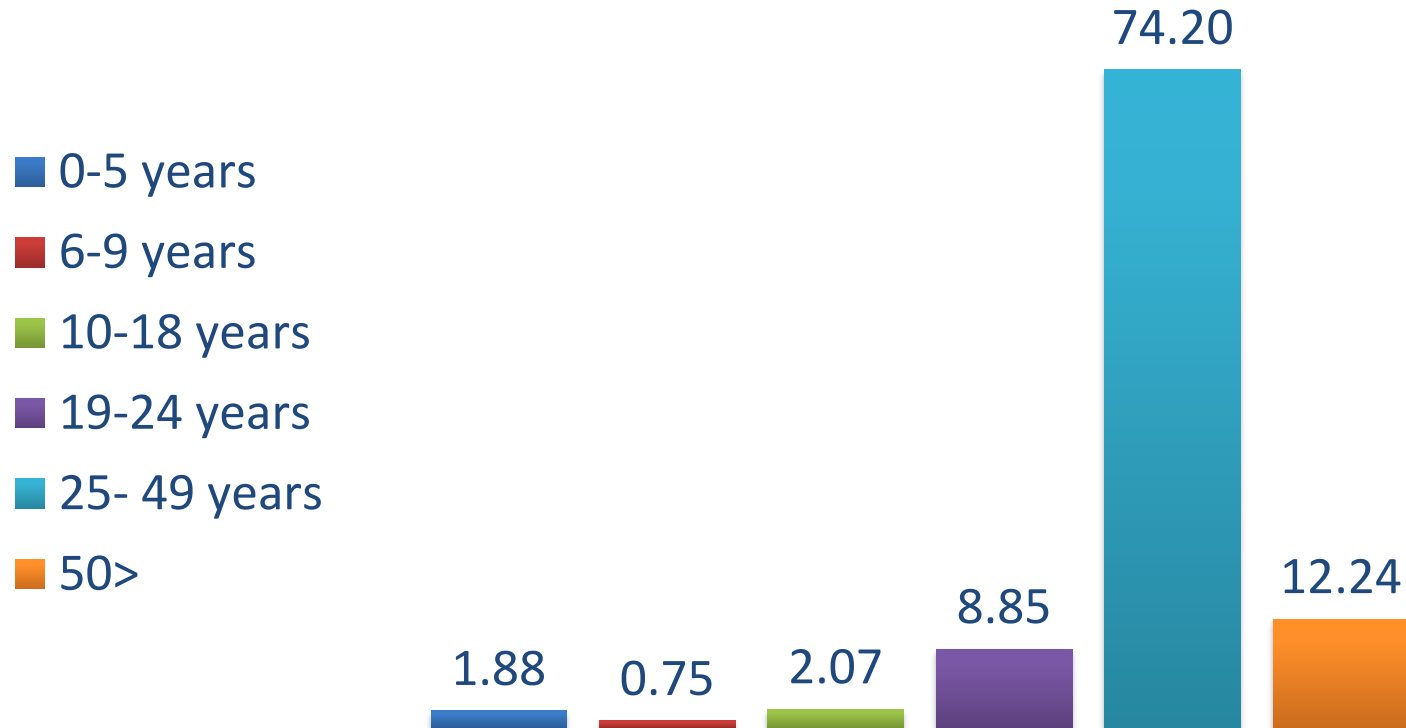


Gender Distribution of New Cases: 2020



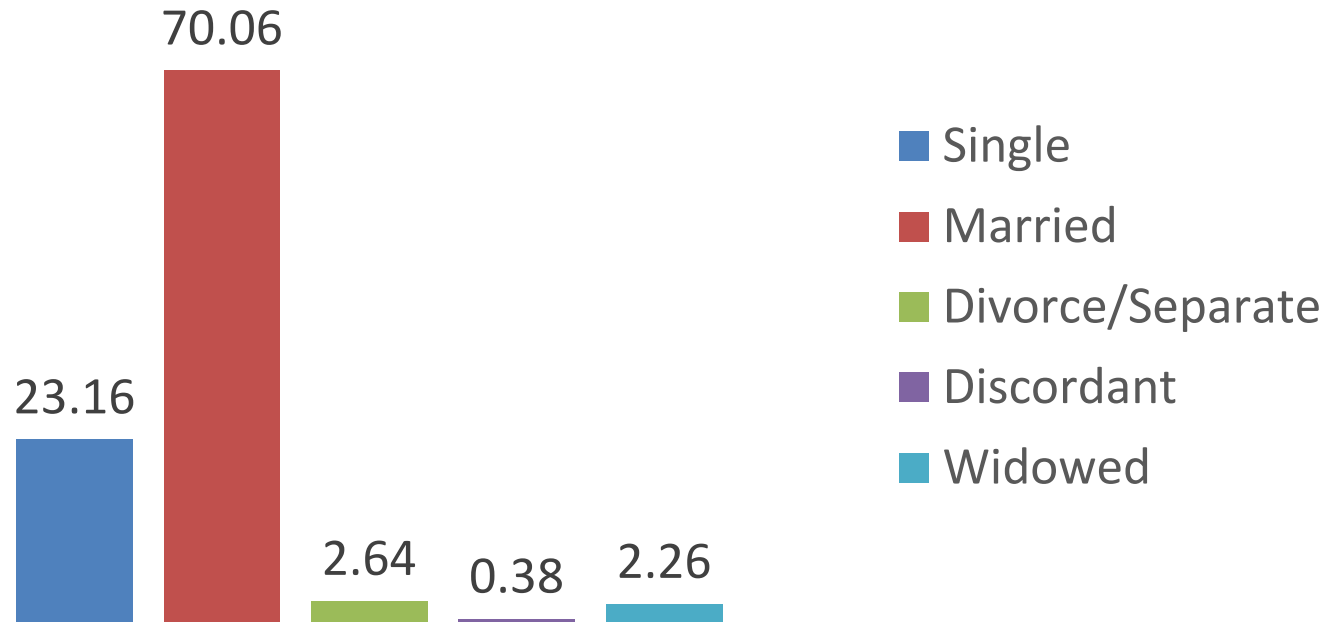
Total HIV positive cases reported= 534

Age Distribution of New Cases:2020



Maximum number of identified HIV positive people came from age group (25-49) and some of HIV positive found from above 50 years age population.

HIV New Cases 2020: Marital Status



Most of the identified HIV positive people were married and second one is unmarried population. So, the rate of HIV detection among married populations is much higher than in others.

Migration Status of New Cases:2020

Gender	Number
Male	84
Female	10
Hijra	3
Total	97

Within the host population over 18% reported cases of HIV positive are Migrant

ART Coverage in New HIV Cases:2020

Population	New Detection	ART Recipient			Total	%
		Male	Female	Hijra		
Host Population	534	341	106	13	460	86.1
FDMN	124	40	80	0	120	96.8
Total	658	381	186	13	580	88.4

TB/HIV Co-infection in New HIV Cases:2020

Population	Number		Percentage of TB Treatment
	TB Detected	Enrollment in Treatment	
Host Population	27	27	100.0
FDMN	11	11	100.0
Total	38	38	100.0

- All HIV cases screening for TB (GeneXpert)
- Starting of preventive treatment therapy (IPD) for all PLHIV

PMTCT Performance at a Glance: 2020

HIV testing at ANC/Labor/PNC	81,299
New HIV positive pregnant cases	20
Total PMTCT enrollment	35
HIV positive pregnant women on ART	35
Total Live Birth	39
HIV negative (EID at 6 weeks)	38
HIV positive	0



Geographic Distribution of New Cases 2020

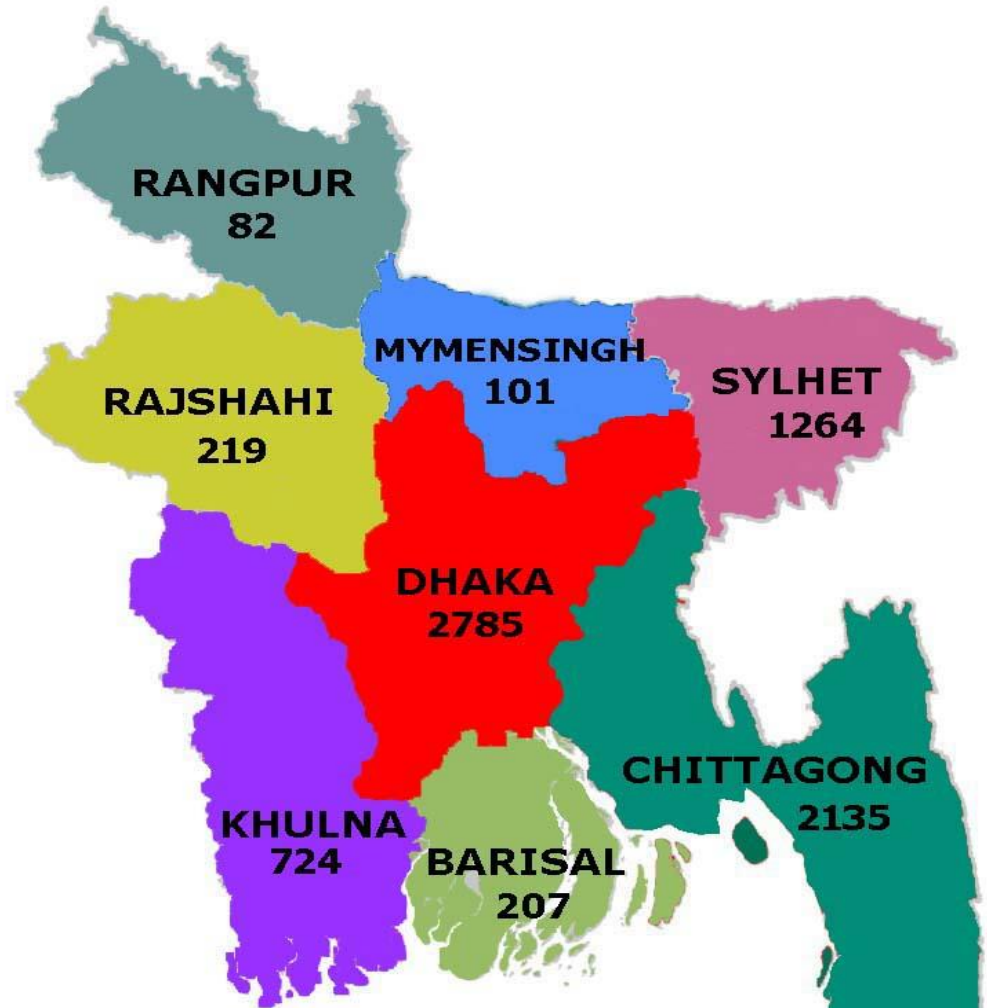


TOTAL FDMN = 124



এইডস সম্পর্কে জানুন, সুরা পান
জাতীয় এইডস/এসটিভি কন্ট্রোল
যাচা অধিদপ্তর, স্বাস্থ্য ও পরিবার কল্যাণ মন্ত্রণালয়

Geographic Distribution of Cumulative Cases 1989-2020



TOTAL FDMN = 514



জাতীয় এইডস/এসটিভি কন্ট্রোল
স্বাস্থ্য অধিদপ্তর, স্বাস্থ্য ও পরিবার কল্যাণ মন্ত্রণালয়

Challenges

- ✓ Increasing the HIV testing facility and number of testing especially in private sector
- ✓ The capacity of all District Hospitals and Medical College Hospital laboratories to use RTD for HIV testing.
- ✓ Tracking the HIV positive returnee migrants and enrollment into ART services
- ✓ Integration of the KPs health services in government and private health system

Future Plan

- ✓ Expansion of HIV testing services in all districts (district hospital or medical college hospital)
- ✓ Establishment of strong collaboration with Ministry of Foreign Affairs and Ministry of Overseas Expatriate and Employment for tracking returnee migrants
- ✓ Integration of the KPs health services in government and private health system as piloting basis
- ✓ Comprehensive HIV programme among prisoners and sensitization of the law enforcement agency / police intervention
- ✓ To incorporate Pregnant Mother to Child Transmission (PMTCT) programme with regular Government health services through ANC
- ✓ Larger planning about STI/RTI investigation, treatment, care support to mitigate the increase risk of HIV transmission





World AIDS Day 2019



Meeting with BTV




Coordination Meeting in Rajshahi



Meeting with Journalist



Thank You



বিশ্ব এইডস দিবস
১ ডিসেম্বর ২০২০

স্বাভা বিশ্বেত ঐক্য,
এইডস প্রতিরোধে সবাই নিব দায়িত্ব

WORLD AIDS DAY
1 December 2020

Global Solidarity,
Shared Responsibility

Logos: UNAIDS, UNICEF, IOM, Save the Children, icddr, b



জাতীয় এইডস/এসটিভি কন্ট্রোল
থ্যাট অর্গানাইজেশন, স্বাস্থ্য ও পরিবার কল্যাণ মন্ত্রণালয়