



# **WORLD AIDS DAY 2021**

## **HIV/AIDS Situation in Bangladesh**

**DR. Md. Khurshid Alam**

**Director (DGHS) & Line Director**

**TB-L & AIDS/STD Programme**

**Directorate General of Health Services (DGHS)**



জাতীয় এইডস/এসটিডি কন্ট্রোল  
যাছা অধিদপ্তর, যাহা ও পরিবার কল্যাণ মন্ত্রণালয়

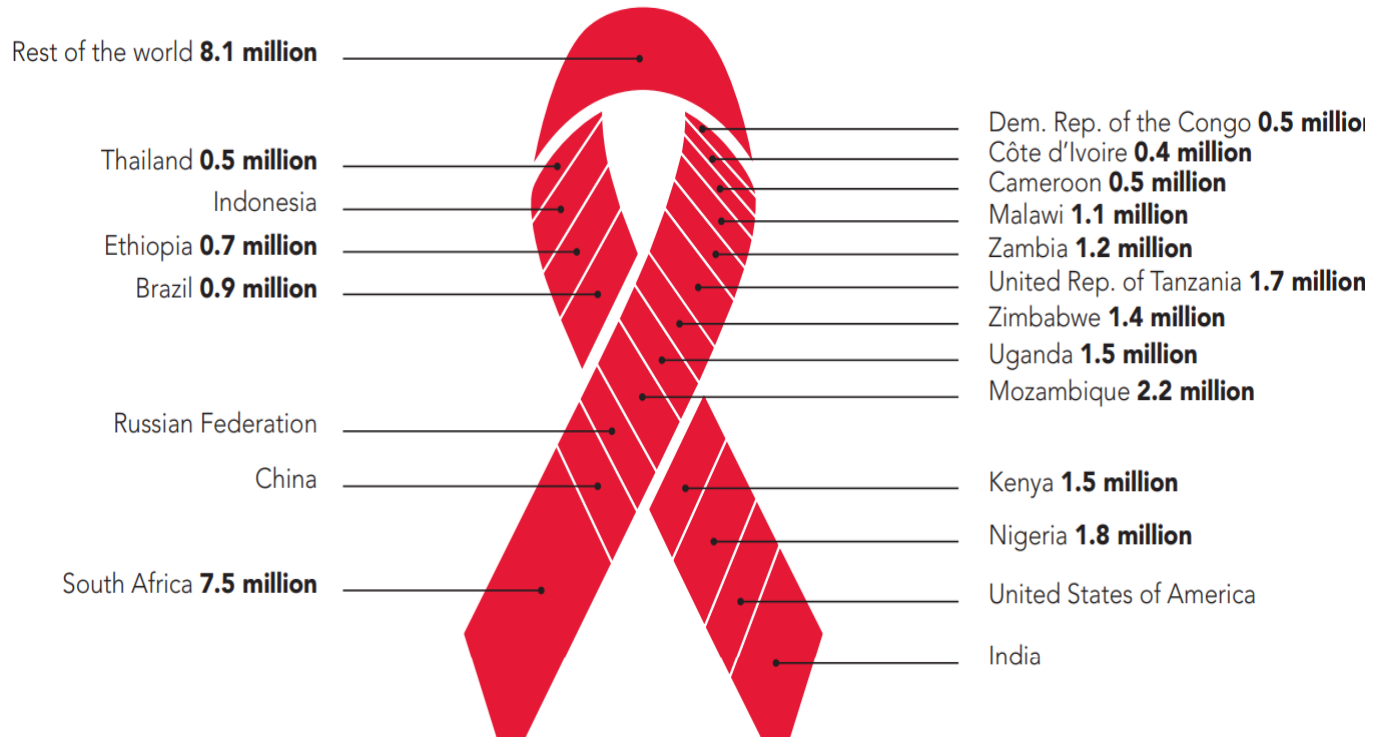
# Bangladesh Situation

- In Bangladesh the first HIV case was detected in 1989
- HIV prevalence remains less than 0.01% among general population
- HIV prevalence remains about 3.9% among the key population mostly in PWID as per 2016 surveillance (new IBBS surveillance was done and dissemination will arrange mid December 2021)
- Estimated number of People Living With HIV is 14,000

(Estimates range: 12,000-16,000, Source: UNAIDS, 2018)



# Global Estimates for Adults and Children | 2021



**Total: 37.7 million [30.2 million–45.1 million]**

<b>People living with HIV</b>	<b>37.7 million [30.2 million–45.1 million]</b>
<b>People newly infected with HIV</b>	<b>1.5 million [1.0 million–2.0 million]</b>
<b>Deaths due to AIDS</b>	<b>680 000 [480 000–1.0 million]</b>
<b>People living with HIV on antiretroviral therapy</b>	<b>28.2 million</b>

Source: UNAIDS



# Regional Estimates

## Asia and the Pacific Region |2021

People living with HIV in Asia and the Pacific	5.8 million [4.3 million– 7.0 million]
New HIV infections in the region	240 000 [170 000– 310 000]
New HIV infections among children	13 000 [8100– 18 000]
People had access to antiretroviral therapy	3.7 million [3.5 million– 3.6 million]
People died of AIDS-related illnesses	130 000 [87 000– 200 000]

Source: UNAIDS



# **HIV/AIDS Situation in Bangladesh of 2021**

## **(November, 2020- October, 2021)**



# Testing and Screening Information in-2021

Indicators	Testing	Screening
KPs	65,698	
TB-HIV other comorbidity	18,043	
General Population	48,186	
GAMCA	383,166	
SBTP	0	662,757
PMTCT	113,219	
Total	628,312	662,757

Source: Programme Data, private sector diagnosis, SBTP



# Reported Cases-2021

## New HIV positive and Death Cases

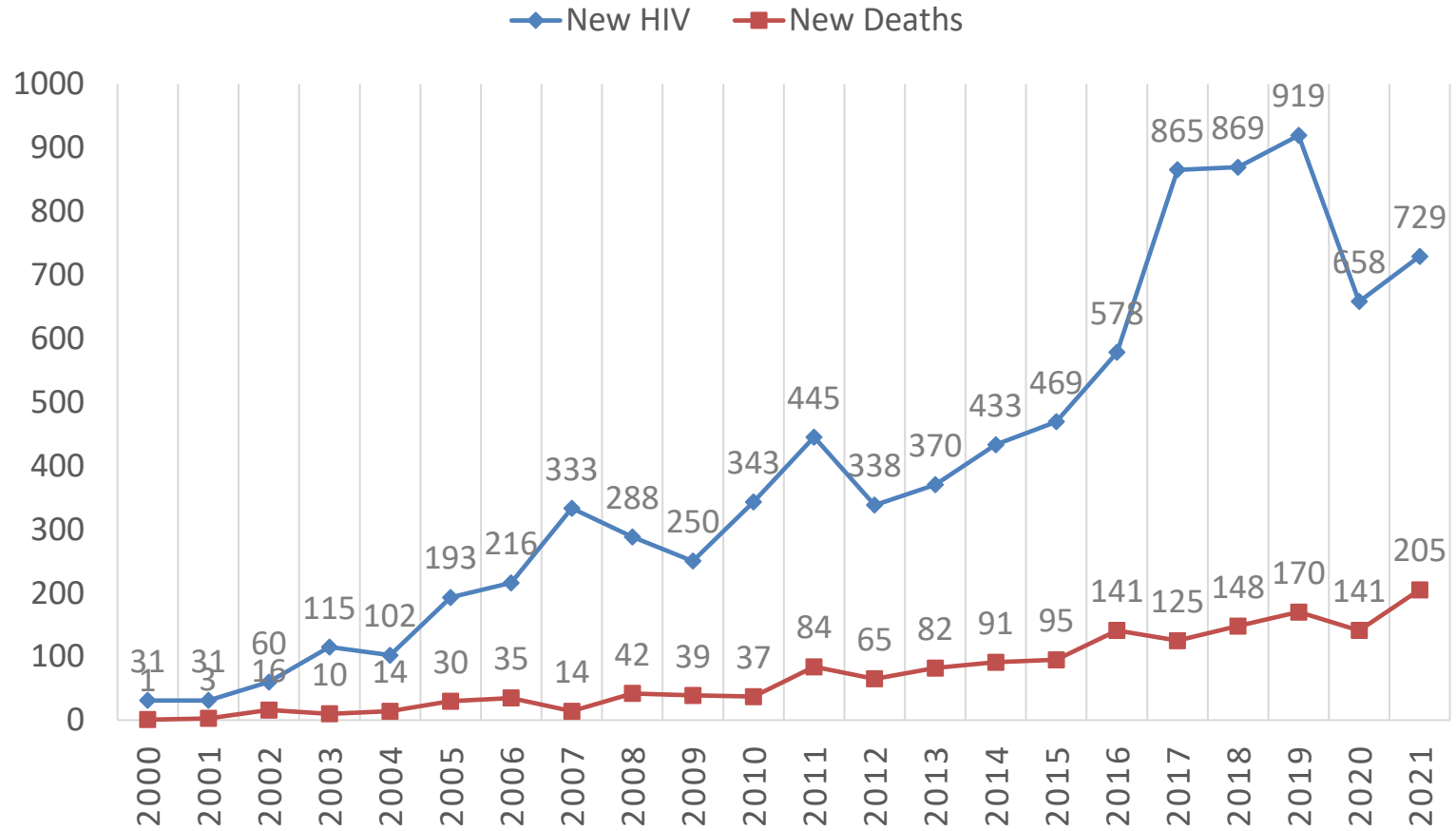
Indicator	New Cases in 2021	Cumulative Cases as of 1989-2021
HIV positive	729	8,761
Death	205	1,588

**Rohingya (FDMN) cases = 188**

Source: Implementing Partners, ASP



# New HIV and Death Cases Per Year (1989-2021)

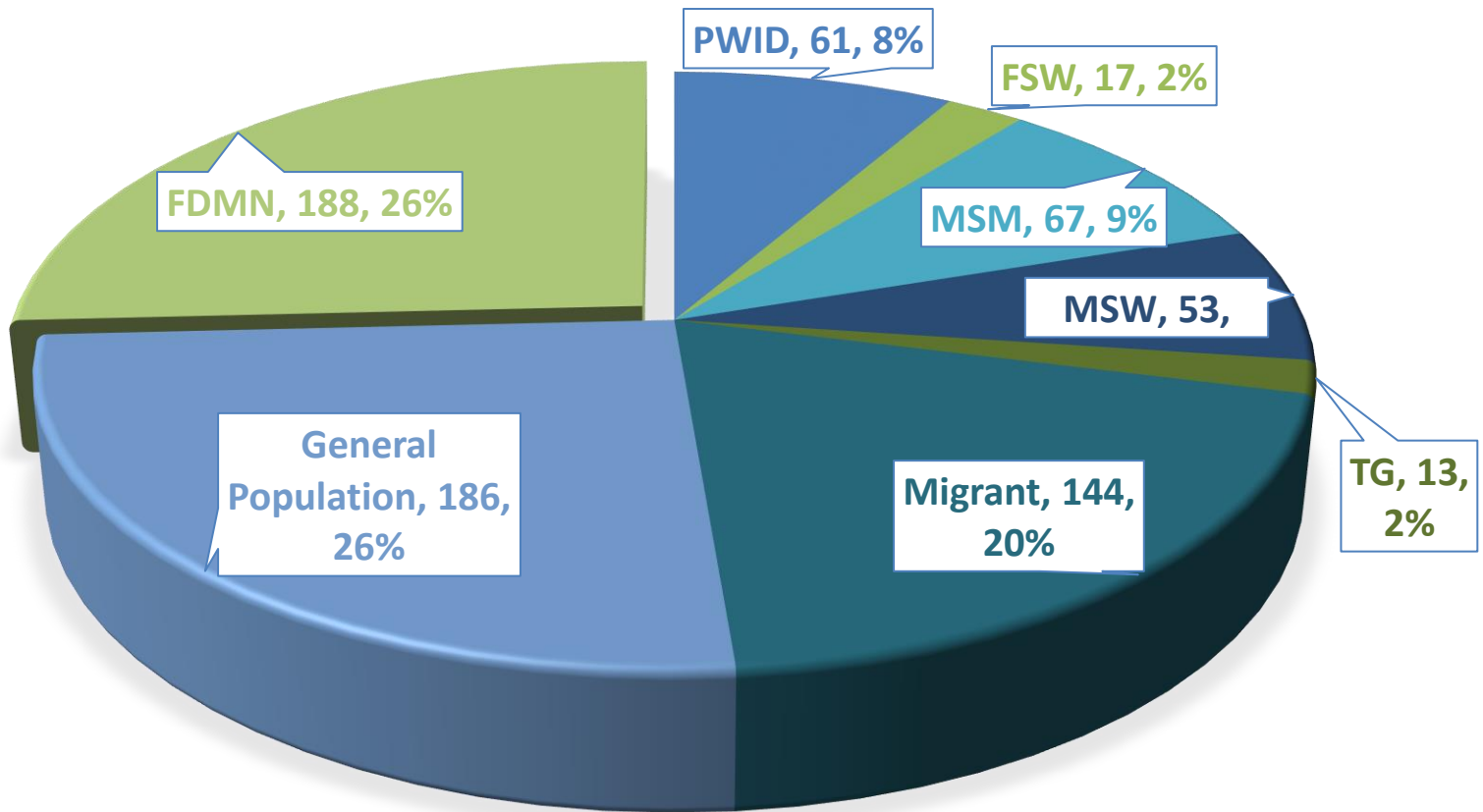


Source: ASP





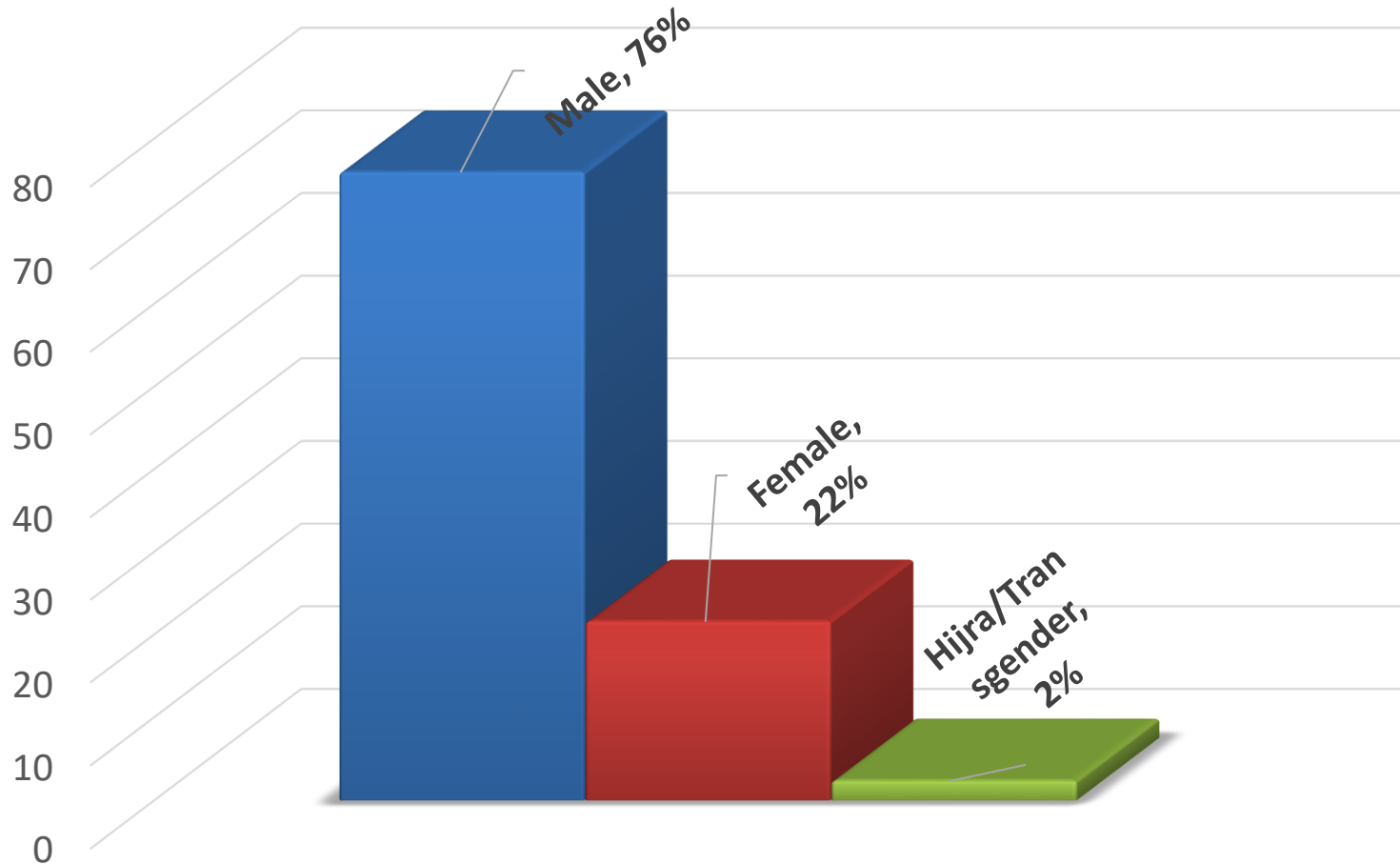
# Population Category among newly infected PLHIV: 2021



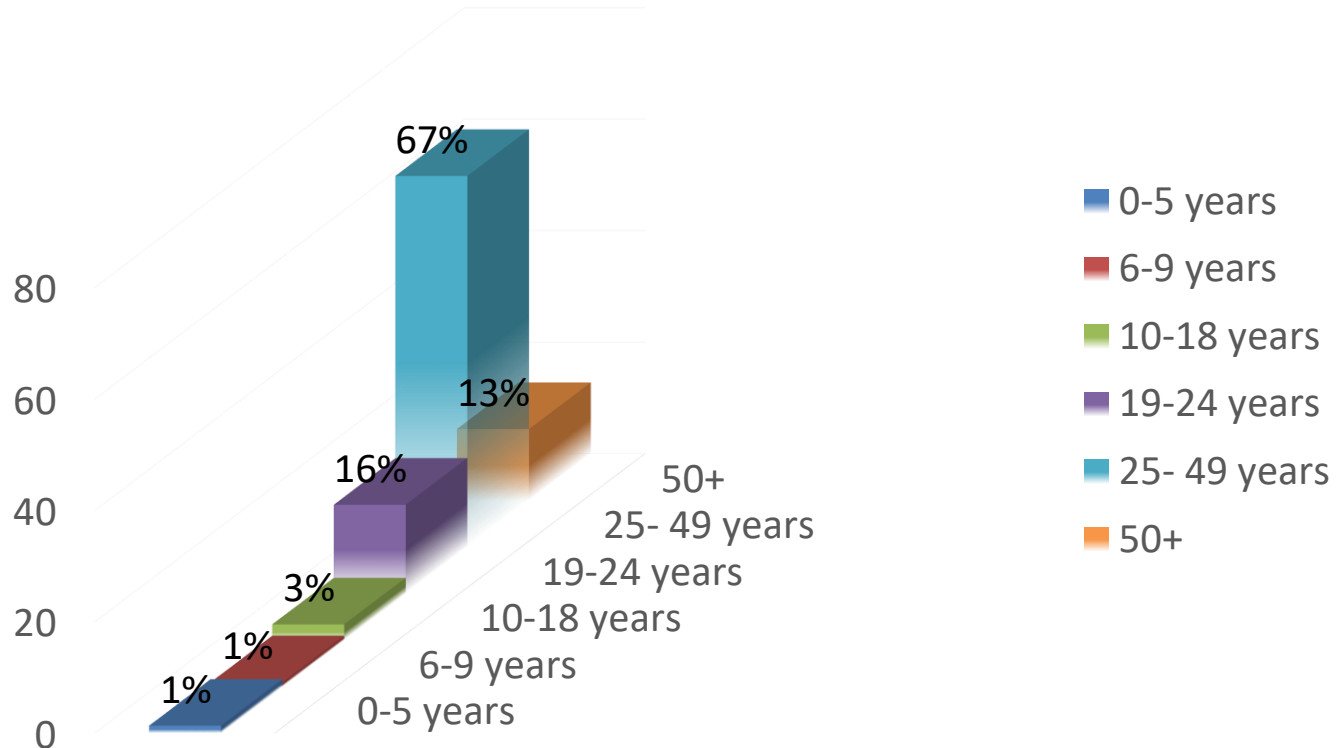
Source: ASP



# Gender Distribution of New Cases: 2021

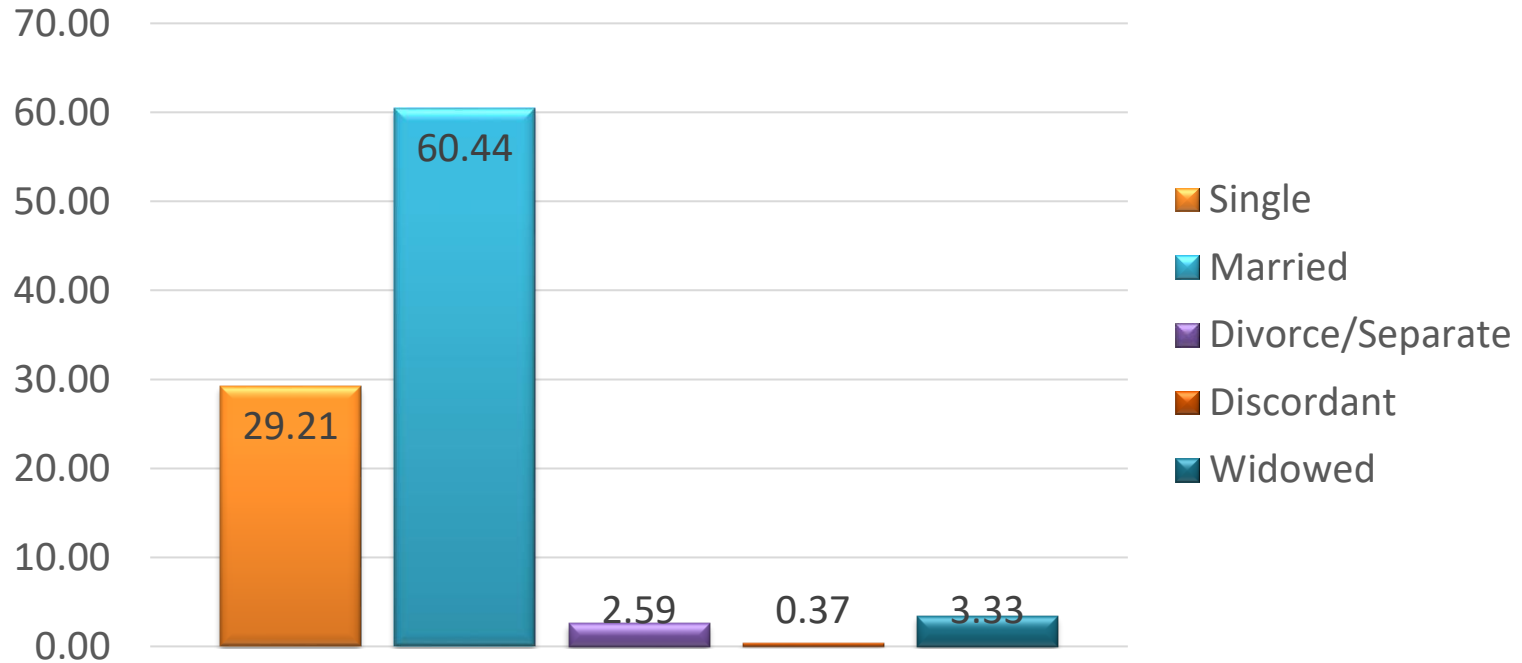


# Age Distribution of New Cases:2021



**Maximum number of identified HIV positive people came from age group (25-49) and some of HIV positive found from (19-24) years age population.**

# HIV New Cases 2021: Marital Status

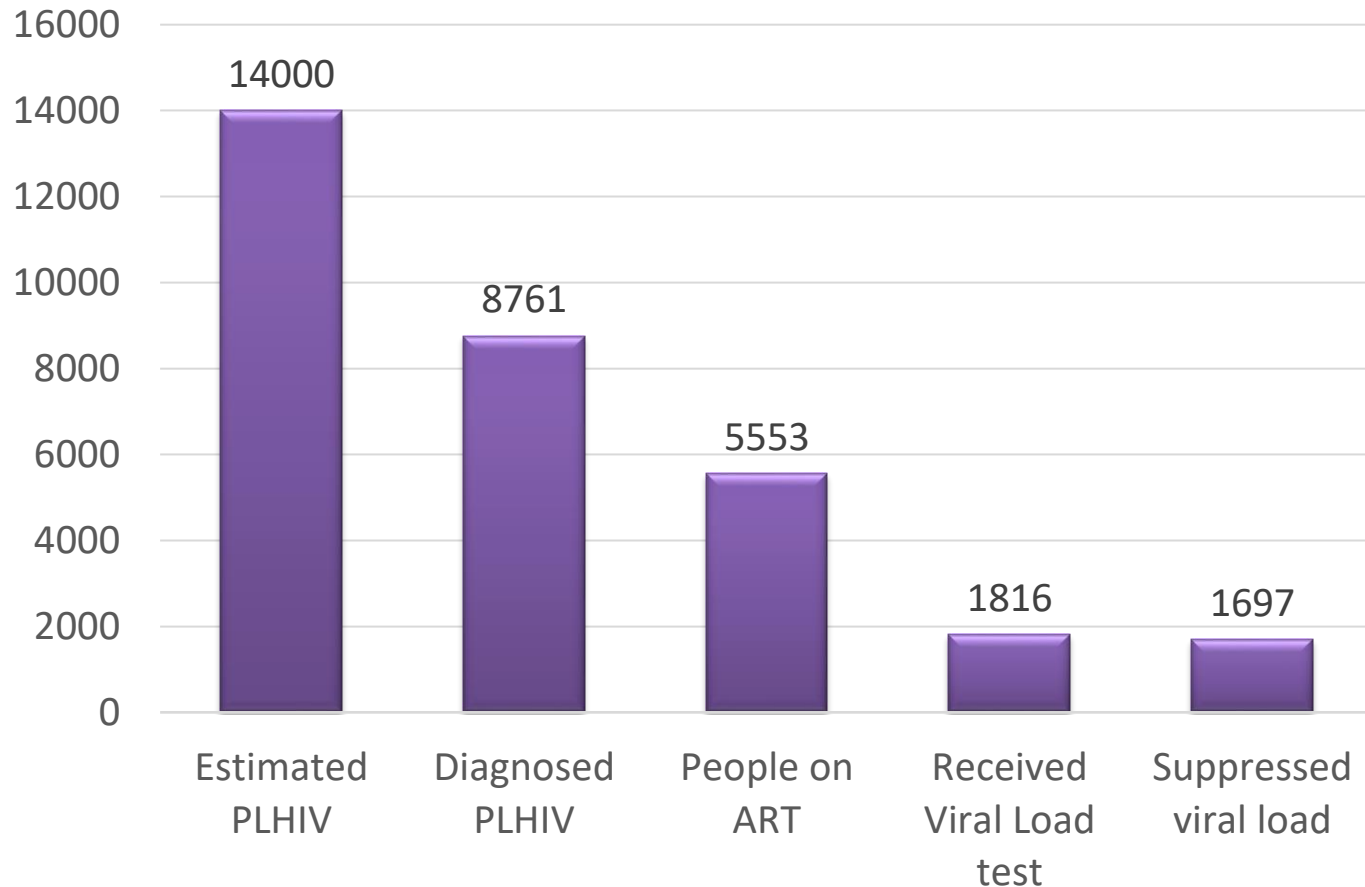


**Most of the identified HIV positive people were married and second one is unmarried population. So, the rate of HIV detection among married populations is much higher than in others.**

# ART Coverage in New HIV Cases:2021

Population	New Detection	ART Recipient			Total	%
		Male	Female	Hijra		
Host Population	541	347	97	12	456	84.29
FDMN	188	73	113	0	186	98.94
<b>Total</b>	<b>729</b>	<b>420</b>	<b>210</b>	<b>12</b>	<b>642</b>	<b>88.07</b>

# Cumulative cross sectional cascade for HIV Treatment and Care, Bangladesh, 2021



\* Number of people on ART who received a viral load test in the past year and have VL of <1000copies/ml

# 95-95-95 Status in Bangladesh 2021

63%



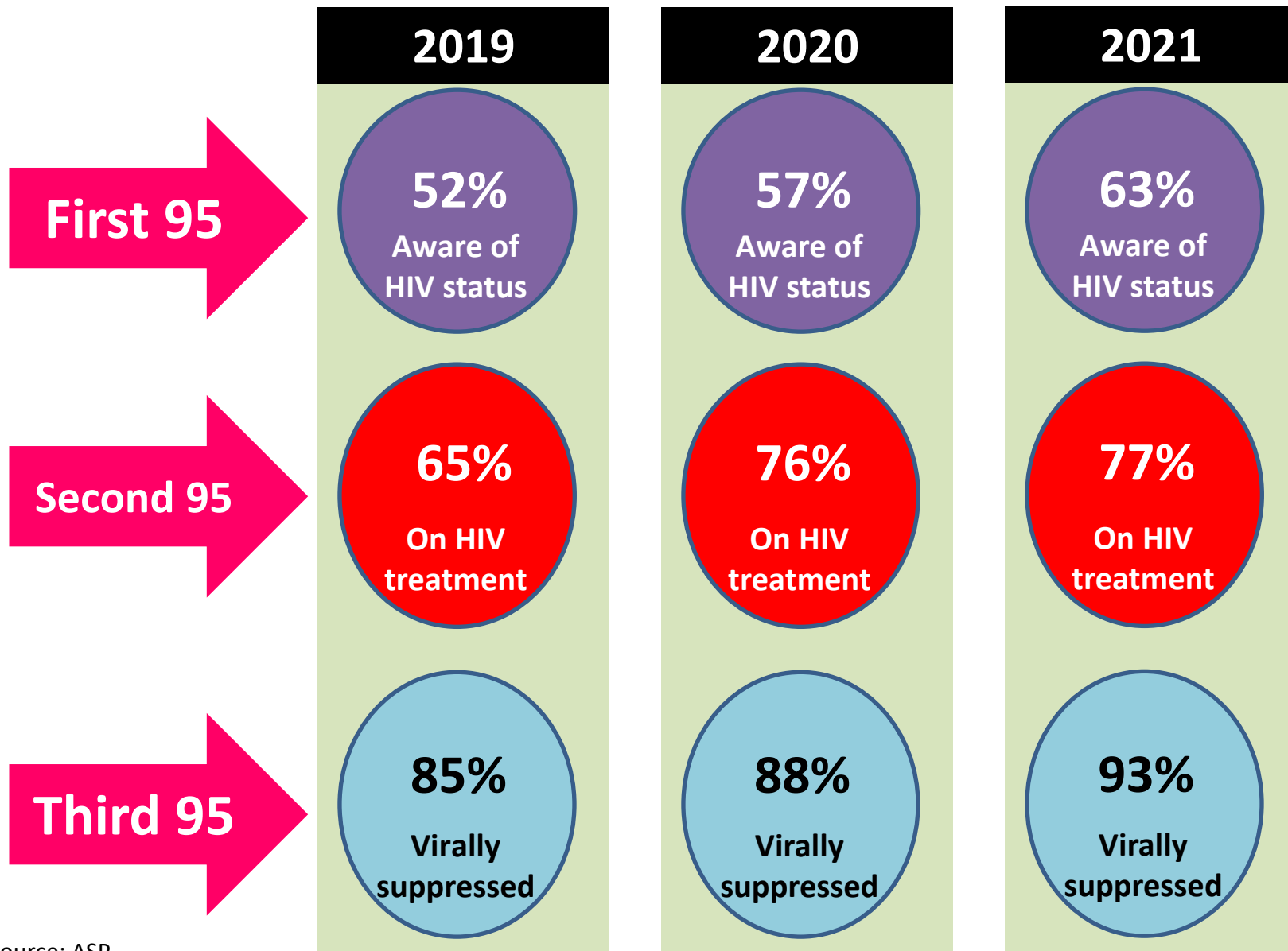
77%



93%



# Year wise comparison of Fast Track Strategy in Bangladesh



Source: ASP



জাতীয় এইডস/এসটিভি কেন্দ্র  
বাছা অধিদপ্তর, বাছা ও পরিবার কল্যাণ মন্ত্রণালয়

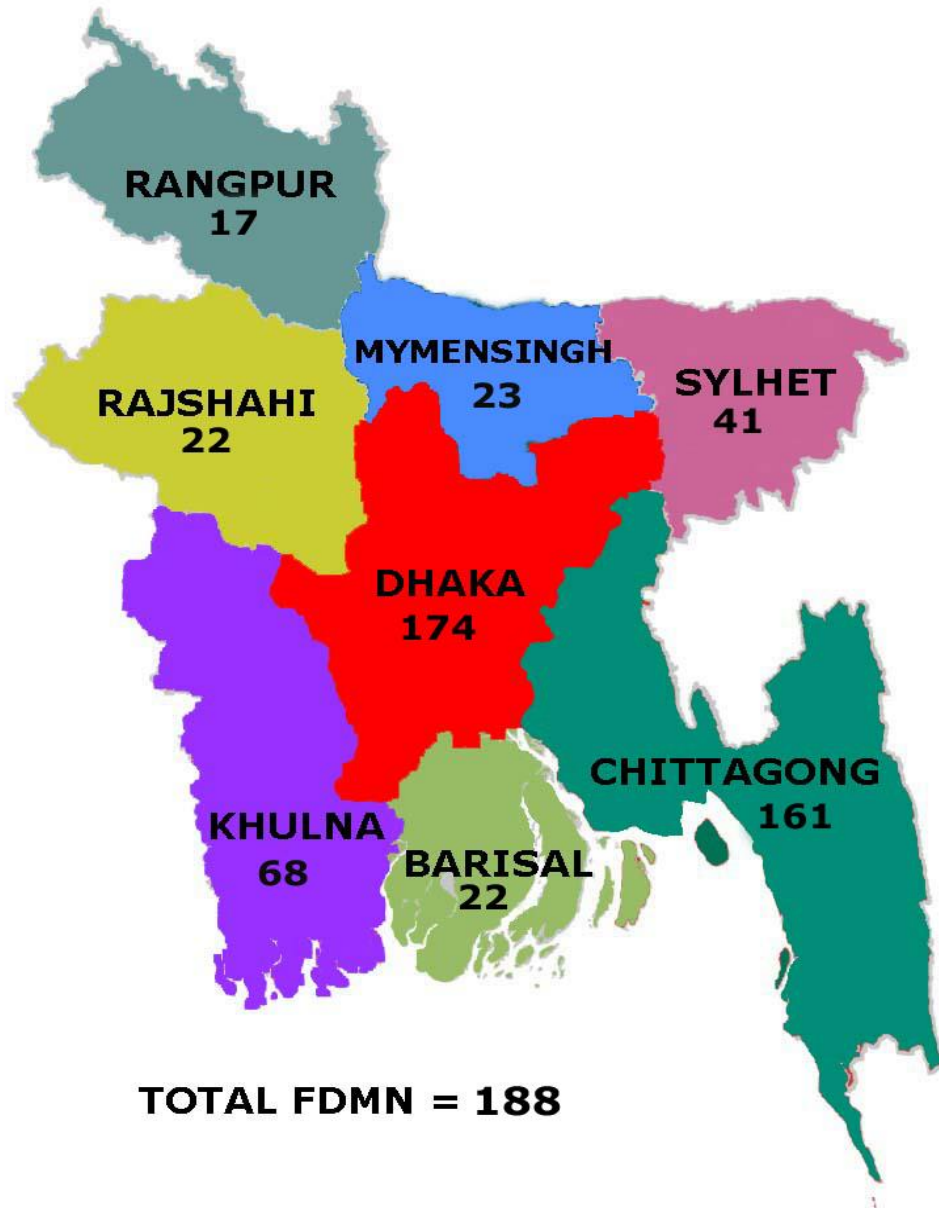


# PMTCT Performance at a Glance: 2021

<b>HIV testing at ANC/Labor/PNC</b>	<b>1,09,087</b>
New HIV positive pregnant cases	21
Total PMTCT enrollment (old and new cases)	72
HIV positive pregnant women on ART	72
Total Live Birth	53
HIV negative (EID during 6 to 8 weeks)	43
HIV positive	0



# Geographic Distribution of New Cases 2021



**TOTAL FDMN = 188**



# Challenges

- # Increasing the HIV testing facility and number of testing especially in private sector
- # The capacity of all District Hospitals and Medical College Hospital laboratories to use RTD for HIV testing.
- # Tracking the HIV positive returnee migrants and enrollment into ART services
- # Integration of the KPs health services in government and private health system

# Future Plan

- ❖ Expansion of HIV testing services in all districts (district hospital or medical college hospital)
- ❖ Establishment of strong collaboration with Ministry of Foreign Affairs and Ministry of Overseas Expatriate and Employment for tracking returnee migrants
- ❖ Integration of the KPs health services in government and private health system as piloting basis
- ❖ Comprehensive HIV programme among prisoners and sensitization of the law enforcement agency / police intervention
- ❖ To incorporate Pregnant Mother to Child Transmission (PMTCT) programme with regular Government health services through ANC
- ❖ Larger planning about STI/RTI investigation, treatment, care support to mitigate the increase risk of HIV transmission

# Thank You



বিশ্ব এইডস দিবস  
১ ডিসেম্বর ২০২১

**WORLD AIDS DAY**  
1<sup>st</sup> December 2021  
• End Inequalities • End AIDS  
• End Pandemics

সমতার বাংলাদেশ  
এইডস ও অতিমারী হবে শেষ

স্বাস্থ্যবিজ্ঞান বিভাগ, বাংলাদেশ সরকার

মুজিব শতবর্ষ

UNAIDS, UNICEF, WHO, IOM, Save the Children, icddr, b



জাতীয় এইডস/এপিডি কমিটি  
বাছা অধিদপ্তর, বাছা ও পরিবার কল্যাণ মন্ত্রণালয়